

nes

COMBINED SOLUTIONS FOR INDUSTRY





# MEDICAL & HEALTHCARE SERVICES

**WE APPLY OUR COMPETENCIES IN THE MEDICAL &  
HEALTHCARE INDUSTRY TO OFFER A FULL-SERVICE: FROM  
THE IDEA TO MARKET**

For the medical sector, we support companies in the study, **design, development** and **manufacturing** of devices. We follow a certified product development process from **engineering to testing, and to validation** for obtaining the regulatory approval.



- **R&D SERVICES FOR MEDICAL DEVICES INDUSTRY**
- **FAILURE ANALYSIS FOR MEDICAL SECTOR**
- **CUSTOM 3D: FROM CT SCAN OR MRI TO A 3D PROTOTYPE. PATIENT SPECIFIC ADDITIVE MANUFACTURING, A PERFECT PREOP PLANNING FOR A BETTER SURGERY**
- **MOVE CLINICAL: THE BEST WAY TO MANAGE CLINICAL DATA IN COMPLIANCE WITH THE NEW MDR (UE) 2017/745**  
SERVICE POWERED BY OUR SHOWMOTION TECHNOLOGY (SEE NEXT PAGE FOR DETAILS)
- **MOTION ANALYSIS & ERGONOMICS STUDIES**  
SERVICE POWERED BY OUR SHOWMOTION TECHNOLOGY (SEE NEXT PAGE FOR DETAILS)

# MEDICAL DEVICES

OUR MEDICAL DEVICES RANGE FROM IMPLANTABLES AND INSTRUMENTS IN THE FIELD OF ARTHROSCOPY AND TRAUMATOLOGY TO DIAGNOSTIC APPLICATIONS IN REHABILITATION, ERGONOMY AND SPORT.

OUR INNOVATIVE APPROACH BRINGS SIGNIFICANT IMPROVEMENT TO THE WAY PATIENTS ARE BEING TREATED AS WELL AS THEIR HEALING IS MONITORED TODAY

## SPORT MEDICINE

### Taylor Stitcher

Surgical instrument for the creation of transosseous tunnels in the repair of rotator cuff injuries with a biological healing process.



### Elite-SPK & Sharc-FT®

PEEK (Elite-SPK) and TITANIUM (Sharc-FT®) devices for "tunnel augmentation" of Transosseous approaches designed for use in arthroscopic and/or mini-open surgery for a superior biomechanical performance.



## TRAUMA

### Mutifix Hand, Mutifix Wrist

A smart, easy and minimally invasive system for the fixation of bones fractures of the hand and wrist.



## REHABILITATION

### Shoulder Pacemaker

The Shoulder Pacemaker device is an interactive wearable electro stimulator that automatically recognizes motion tasks and is intended to treat patients with posterior functional shoulder instability.

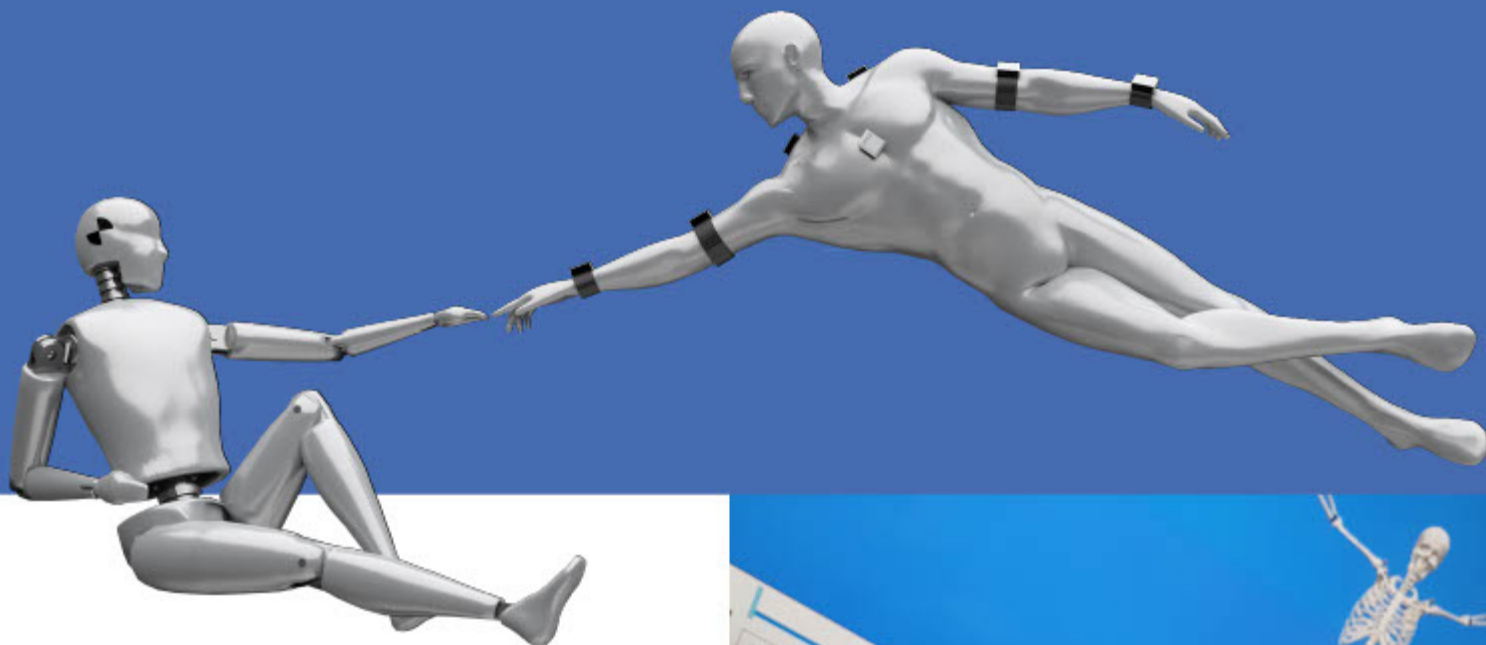


## TRAINING

### Dexter

The Dexter Training Model is a portable, realistic and cost-effective simulator designed to build your confidence and skills in arthroscopy and practice (everywhere) new techniques.





## MOTION ANALYSIS

### Showmotion

Through the use of inertial platforms and validated protocols for upper and lower limbs, Showmotion™ is the perfect tool to measure, record, segment, compare and document movements and provide a visual representation of the variables involved. Showmotion™ will transform the way human movements are evaluated and measured for physicians, clinicians, therapist, and athletes. By providing a quick, easy, consistent, standardized and reproduceable tool for our customers, we will help to improve surgical techniques, implant design, physical therapy and physical conditioning.

### Cogito Ergonomics Service

COGITO ERGONOMICS Service, born from Showmotion™, is the services offered for the analysis of movement in the ergonomic field to optimize products, production processes and work environments.

